

**CT DEEP** **2016**  
**FISHING REPORT NUMBER 18**  
**8/11/2016**



Redbreast sunfish (*Lepomis auritus*)



**YOU CAN FIND US DIRECTLY ON FACEBOOK.** This page features a variety of information on fishing, hunting, and wildlife watching in Connecticut. The address is [www.facebook.com/CTFishandWildlife](https://www.facebook.com/CTFishandWildlife).

**SHARE THE EXPERIENCE**  
Take someone fishing

## INLAND REPORT

**LARGEMOUTH BASS** fishing is generally reported as fair to good (with a few tough spots). Night fishing is productive. Try black jitterbugs and surface poppers. Places to try include Lake McDonough, West Hill Pond, East Twin Lake, Gardner Lake, Pickerel Lake, Beseck Lake, Amos Lake, Beach Pond, Highland Lake, Seymour Reservoir #4, Crystal Lake, Mudge Pond, West Side Pond, Tyler Lake, Mansfield Hollow Reservoir, Dog Pond, Hatch Pond, Park Pond, Lake Wononskopomuc, Lake Saltonstall, Bishop Swamp, Winchester Lake, Congamond Lakes, Quinebaug Lake, Black Pond (Meriden), Burr Pond, Griggs Pond, Anderson Pond, Billings Lake, Moodus Reservoir, Aspinook Pond, Babcock Pond, Pachaug Pond, Lake Hayward, Quonnipaug Lake, Rogers Lake and Stillwater Pond.

**Tournament angler** reports are from Aspinook Pond (fair to good, 5.44 lb lunger), Gardner Lake (fair fishing for an evening tourney, 2.91 lb lunger), Mansfield Hollow Reservoir (tough fishing, 3.72 lb lunger), Connecticut River (slow bit for a club out of Riverside Park, 4.5 lb lunger), Candlewood Lake (slow to fair, 5.13 lb lunger), and Lake Zoar (slow to fair, 4.0 lb lunger).

**SMALLMOUTH BASS.** Catches reported from Candlewood Lake, Housatonic River (Upper), Naugatuck River, Lake McDonough, Lake Zoar and Lake Lillinonah. Housatonic River smallmouth fishing has been good.

**Tournament angler** reports are from Aspinook Pond (a few in the bags), Gardner Lake (very tough), Candlewood Lake (fair action at best, 3.89 lb & 3.69 lb lungers), Lake Zoar (slow to fair action), and the Connecticut River (fair smallmouth action for a club launching from Riverside Park, 3.75 lb lunger).

**CARP** were caught in Lake Zoar, Hanover Pond, Batterson Park Pond, and Aspinook Pond, and the Lower Housatonic River (New Milford).

**THIS SATURDAY, AUGUST 13, is a**

## *FREE FISHING LICENSE DAY*

The second 2016 (and final) Free Fishing License Day is this Saturday, **August 13, 2016** (and also the day of the NCLI/DEEP CARE program Saltwater fishing event at Fort Trumbull State Park – see page 7 for more information on this event). **Anyone can obtain a free one-day fishing license to fish this day.**

**The free 1-day license** can be obtained through our convenient online site at [www.ct.gov/deep/sportsmenlicensing](http://www.ct.gov/deep/sportsmenlicensing) (now mobile friendly!) and at the same vendors ([Designated vendor \(tackle shop\)](#)), Town Halls and DEEP offices where other licenses are available ([DEEP Offices](#)).

**KOKANEE SALMON** catches were reported from East Twin Lake (early morning) and West Hill Pond (early night fishing with corn, south end). Target 30-35 feet with down riggers on beads.

**NORTHERN PIKE** fishing success is reported from Lake Lillinonah, Winchester Lake, and Bantam Lake.

**CATFISH** – Good fishing in ongoing in our [Catfish Management Lakes](#) including; Keeney Park Pond (Hartford), Black Pond (Middlefield), Mirror Lake (Meriden), Wauregan Reservoir (Killingly), Spaulding Pond (Norwich) and Silver Lake (Meriden).

**PANFISH** has been excellent this season so far. For some great summer time fun try shore fishing in shallow areas. This simple and inexpensive method is the best way to get into them, small grubs, worms or shiners and bobber will put fish in your creel. Both small local ponds and larger waters work great. Areas reporting action include Tyler Lake, Lake Hayward, Keney Park Pond, Morey Pond, Peck Pond, Black Rock State Park Pond, West Side Pond, Dog Pond and Zeiner Pond.

**TROUT-LAKES & PONDS** - Some lakes are still producing good fishing, with reports from Lake McDonough (15 trout for one boat, orange/silver Flash Kings at 7 colors, near outlet), Colebrook Reservoir (25 feet), East Twin Lake (Thinfish Copper; Mooselook Wobbler blue/silver at 30 feet), Beach Pond (Kobra 114, 18 or 5, rigger at 23' feet), Long Pond (streamers), West Hill Pond (south end), Crystal Lake (Ellington, at 7-8 colors, 40 feet of water) and Highland Lake (second bay, 25-30 feet).

**TROUT- RIVERS & STREAMS** - Conditions should be fair again this weekend. This week's rain provided a quick "pulse" but with no significant rain in the forecast, flows will drop quickly – *see stream flow graphic on page 3*). Fishing mornings and early evenings is still producing in the "cooler" trout waters.

**Farmington River** - Fishing has been good on the West Branch and conditions should be good for the weekend. Water temperatures are in the mid 60's°F (and rising in the afternoon). Flows are clear and moderate (currently 59 CFS at Riverton, with the Still River adding an additional 24 CFS).

**Hatches/patterns** include Tricos (*Tricorythodes* #22-24 in the morning; started in the mid-section of the river), *Ephemerella needhami* (#22-26, early morning), Leadwing Coachman (*Isonychia bicolor*, #12-14, fast water, afternoon/evening), Blue Wing Olives (*Drunella* sps. & *Baetis* sps.; #18, 22-24, mid-late afternoon), Caddis (tan #16-20, all day; green #22-26, evening; summer pupa #18-20 morning), Cahills/Summer (*Stenonema ithaca*, #12-14, early morning), Midges (#22-28, morning), Black Ants (#12-18, mid day in fast water), Black Beetles (#16-18, mid day), Flying Ants (#18-22, mid day, when windy/humid), Stone Hopper (#8-12, mid-day), White Flies (#12-14) and Golden Drake (*Anthopotamus distinctus*, #10-14, late evening).

**Housatonic River** – Fishing has been good, and conditions for the weekend should be remain good, especially for Smallmouth Bass. Flows are clear and have increased a bit thanks to this week's rain, and

### ***Thermal Refuges are Critical***

Thermal refuges are places where cold groundwater seeps or drains into a waterbody. These areas have much lower water temperature than the surrounding main waterbody.

Between June 15 and September 15 mainstem water temperatures can be above lethal limits for trout. Refuge area in medium to large rivers like the Naugatuck, Salmon, Housatonic, and Shetucket, are critical for trout to survive the summertime warm water temperatures.

To protect the trout, all fishing is prohibited in and around all refuges as indicated by signage (below). Please do not disturb the trout that are seeking refuge within these areas and report any violations to DEEP law enforcement immediately 860-424-3333.



remain perfect for fishing (currently 182 CFS at Falls Village and 286 CFS at Gaylordsville). Morning water temperatures are currently in the low 70's °F (and rising through the day).

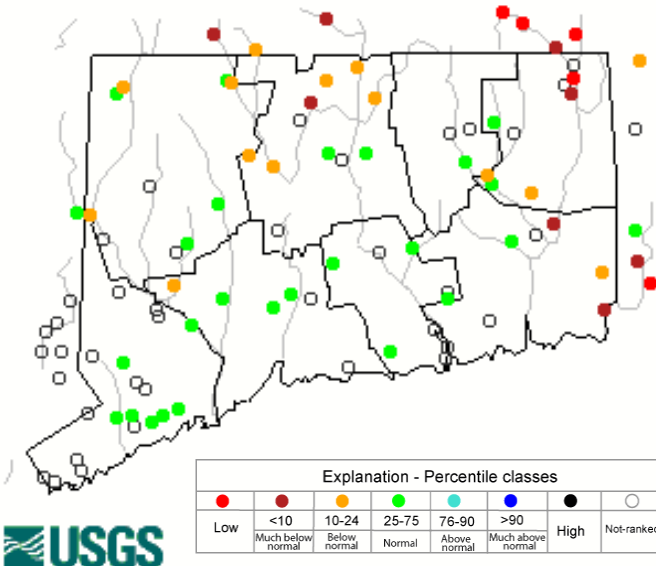
The White Fly (*Ephoron leukon*) hatch is still hanging on. You really don't want to miss this one. Use a White Wulff (#8-12). Other insect activity includes Light Cahill (#12-14, evening), Isonychia (#10-12), Sulfur (#16-18) and Black caddis (#14-18, early morning & evening). Midges (#20-24) and stoneflies are at the mouths of streams, golden stonefly nymphs hatch at first light and adults egg-lay after dark. Don't forget streamers (morning & evening). Patterns to try include White Zonkers, Woolly Buggers, Muddlers, Micky Finn, Grey or Black Ghosts (#4-10). Also try brown crayfish like streamers, they are effective right now.

### CONNECTICUT RIVER

**LARGEMOUTH BASS** are being taken in the coves in the mid to lower river. Last week, **SMALLMOUTH BASS** were caught in the northern river (Windsor & Enfield area). Small to medium size bait were working well. Try 3-4 inch rubber worms on 3/8 ounce football jigs or 2.5 inch paddle tail worms. Surface poppers in that size range can also be effective. **CARP** are being caught in the upper and lower river on pre-baited 'swims'. Anglers are finding **CATFISH** by night angling in the Hartford to Middletown stretch. Try from just north of Hartford on downstream, fish the outside bends (deep holes are producing as well, try cut bait).

#### Stream flow conditions as of 8/11/2016

Thursday, August 11, 2016 15:30ET



Data in the state graphic to the left are generated by the United States Geologic Survey (USGS) and are available on line at: <http://waterdata.usgs.gov/ct/nwis/rt>. A percentile is a value on a scale of one hundred that indicates the percent of data in the data set equal to or below it. For example streamflow greater than the 75<sup>th</sup> percentile means only ¼ of the streamflow values were above the value and thus would be considered "above normal". Stream flow between the 25<sup>th</sup> and 50<sup>th</sup> are considered to be "normal flows" and those 25<sup>th</sup> or less are considered to be "below normal".

## NOTES & NOTICES:

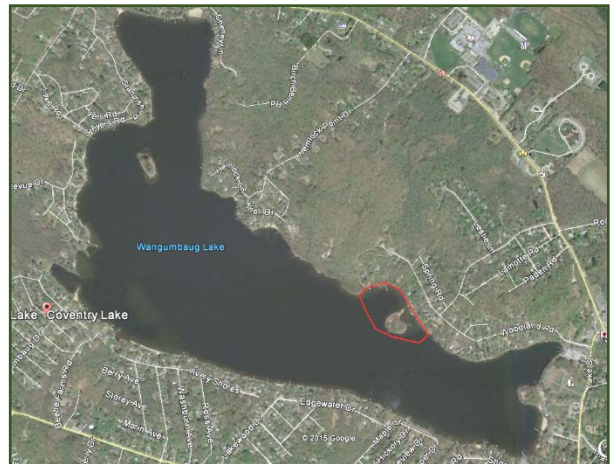
**BANTAM LAKE.** The annual Waterski Exhibition will be held this upcoming weekend in North Bay on Friday, August 12 (4 pm to 8 pm), Saturday, August 13 (1:30 pm – 5 pm) and Sunday, August 14 (1:30 pm – 5 pm). Boaters should use caution in this area.

**BASHAN LAKE (drawdown).** Bashan Lake remains drawn down (slow refill continues – lake currently remains down approximately 4-5 feet – note that refill rate is dependent on rainfall amounts) following dam repairs and the state boat launch remains closed.

**BRANFORD RIVER (boat launch).** The Branford River state boat launch is currently closed for renovations. This closure is currently expected to last to November 14, 2016. Alternative nearby launch sites include the Guilford Town boat launch and the East River State boat launch, both in Guilford.

**COVENTRY LAKE (invasive species alert).** Hydrilla, a very highly invasive aquatic plant, has been found growing in Coventry Lake. All lake users should take extra care to check and clean their boats (including canoes, kayaks and rowing sculls), trailers, and fishing equipment before leaving the boat launch, or leaving the lakeshore.

*Coventry Lake (Wangumbaug Lake) boaters should avoid the area outlined in red to avoid fragmenting and spreading hydrilla. This is only area in the lake where hydrilla has been found.*



**DOOLEY POND (drawdown).** A drawdown of Dooley Pond to facilitate dam repairs is ongoing (expected to last to September 1). The state boat launch is currently closed.

**GLASGO POND (drawdown).** A drawdown of Glasgo Pond to facilitate dam repairs is ongoing (began September 2015). Launching of boats is difficult to impossible.

**LAKE ZOAR (waterski event).** A water ski clinic for the disabled is scheduled for **Saturday, August 13**, in the upper end of Lake Zoar (approximately the upper first mile of the lake below the Shepaug Dam). This event run from 9 am to 4 pm, and boaters are asked to take care when passing through this area (marked by buoys) of the lake, and avoid interfering with the event.

**THERMAL REFUGES:** Anglers are reminded that the thermal refuge areas on the Housatonic, Naugatuck and Shetucket Rivers are now closed to fishing (as of June 15). These areas will reopen on September 15. There is no fishing within 100 feet of signs indicating such closure at or near the mouths of tributaries to these rivers. Additionally, a thermal refuge has been established on the Salmon River in East Haddam, located around a spring entering the Salmon River approximately 220 feet south of the unused paved boat launch at the state-owned property formerly known as the Sunrise Resort off of Route 151. The refuge includes all water within 100 feet from the end of the pipe as posted. The Salmon River refuge will be closed to fishing and access through September 15.

**GIVE WILDLIFE SOME SPACE** we would like to remind everyone to give wildlife appropriate space. Recently human wildlife interactions have been reported with Mute Swans (Lake Zoar) and Beaver (Quinebaug River). Remember- wild animals can be unpredictable.



**PHOTO CONTEST:** Do you have the next Angler's Guide cover shot? Email us your high quality (high resolution) photos at [Deep.inland.fisheries@ct.gov](mailto:Deep.inland.fisheries@ct.gov) and include [photo contest](#) in the subject line.

**CT FISHIN' TIPS** is our monthly e-newsletter dedicated to providing information, tips and pointers about fishing in Connecticut. Get CT Fishin' Tips delivered automatically to your in box by subscribing at [www.ct.gov/deep/newslettersubscription](http://www.ct.gov/deep/newslettersubscription)

**NEW!** Youth Fishing Passport [Fishing Challenge Scorecard](#): Download the new scorecard for your Youth Fishing Passport Holder on the program web page at [www.ct.gov/deep/yfp](http://www.ct.gov/deep/yfp). Top anglers will receive a great prize pack of fishing gear.

### LAKE & POND BATHYMETRIC MAPS

Bathymetric maps of many of Connecticut's public access lakes and ponds can be found online at:

[www.ct.gov/deep/lib/deep/fishing/general\\_information/lakebathymetrymaps.pdf](http://www.ct.gov/deep/lib/deep/fishing/general_information/lakebathymetrymaps.pdf)

Both plain line maps and maps overlaying an aerial photo available.



### ZEBRA MUSSELS REMINDER

**Zebra mussels are now found in a number of locations scattered throughout the Housatonic River and its impoundments including Lake Lillinonah (since 2010), Lake Zoar (since 2010) and Lake Housatonic (since 2011).**

Prior to their discovery in Lakes Lillinonah and Zoar in 2010, zebra mussels had been found (1998) in CT only in East Twin Lake and West Twin Lake (Salisbury). Anglers fishing in any of these waters and western Connecticut in general **should use extra care to avoid transporting water, aquatic vegetation, and possibly zebra mussels to new locations.** Information

For more information including precautions that should be taken to prevent the spread of zebra mussels to additional waters, visit [www.ct.gov/deep/invasivespecies](http://www.ct.gov/deep/invasivespecies) or the Aquatic Invasive species section of the 2016 CT angler's Guide( [www.ct.gov/deep/anglersguide](http://www.ct.gov/deep/anglersguide)).



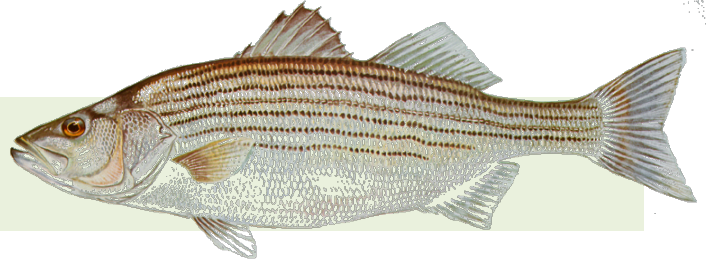
### REMINDER TO ANGLERS-

**FISHING IN OR CASTING INTO PERMITTED SWIM AREAS IS PROHIBITED.**

State regulations prohibit fishing in or into a swim area that's been permitted by DEEP. Additionally, vessels cannot be operated within a permitted swim area, and there's a 100 foot "no-wake" zone around the perimeter. Swim areas that have been permitted by DEEP will be marked by white buoys with orange markings, and there should be a permit number posted on the buoys. They may or may not have small orange barrier floats to further demarcate the area. Should questions arise concerning the validity of the swim area (*no permit numbers or the area appears to have been changed/enlarged or keeps moving*), please contact DEEP's Boating Division at 860-434-8638.



## MARINE FISHING REPORT



Surface water temperatures in Long Island Sound (LIS) are in the upper 70's °F. Check out the following web sites for more detailed water temperatures and marine boating conditions:

<http://www.mysound.uconn.edu/stationstat.html>

[http://marine.rutgers.edu/mrs/sat\\_data/?nothumbs=1](http://marine.rutgers.edu/mrs/sat_data/?nothumbs=1)

<http://www.ndbc.noaa.gov/>

<http://www.wunderground.com/MAR/AN/330.html>

### IMPORTANT NOTES:

**Connecticut State Boundary Line in Long Island Sound.** Anglers please note: Though Connecticut has reciprocity with neighboring states (New York, Rhode Island, Maine and Massachusetts), residents of Connecticut are required to have a CT Resident Marine Waters Sport Fishing License to fish in the Marine District.

**WHALES** have been reported in Long Island Sound (in early July, juvenile humpback whales have been spotted on the New York side of the sound), please see check [WHALE WATCHING GUIDELINES](#).

**Note:** All marine mammals are protected by the Federal Marine Mammal Protection Act. Following these recommended operational guidelines helps minimize chances of harassing or injuring whales and violating Federal law. Guidelines apply to all large whales from Maine through Virginia, except North Atlantic right whales. It is illegal to approach a right whale within 500 yards (1500 feet) unless granted specific exemption or authorization.

**SHARK SPECIES YOU MAY ENCOUNTER IN COASTAL WATERS OF CONNECTICUT:** Anglers may catch Sand Tiger and Sandbar (Brown) Shark which are protected and prohibited species and must be released unharmed. **IF YOU DON'T KNOW, PLEASE LET IT GO!** [Coastal shark information](#).

**SEA TURTLES:** [See a Tangled Turtle? Call the Hotline!](#) 1-860-572-5955 ext. 107. This is the time of year when leatherback, loggerhead, green, and Kemp's ridley sea turtles return to northern waters, with many sightings around Long Island Sound.

**STRIPED BASS** fishing remains fair to good. Live lining bunker (Atlantic menhaden) or scup on the reefs at dawn and dusk has been productive. Striper spots include the Watch Hill reefs, Ram Island Reef in Fishers Island Sound, lower Mystic and Thames River, the Race, Sluiceway, Plum Gut, Pigeon Rip, outer Bartlett Reef, Black Point, the "humps" south of Hatchett Reef, lower Connecticut River, Long Sand Shoal, Cornfield Point, Southwest Reef (outer), Sixmile Reef, Falkner Island area, the reefs off Branford, New Haven Harbor and the upper reaches, Charles Island area, lower Housatonic River, buoys 18 and 20

## Saltwater Fishing at Fort Trumbull State Park

**Saltwater Fishing Event:** Our annual [CARE](#) and [No Child Left Inside](#) Summer Fishing Event will be held on Saturday, August 13, 2016 (coinciding with free fishing license day). The event will be at [Fort Trumbull State Park](#) from 10 am to 3 pm. Feel free to bring your own fishing gear or you can borrow ours. We will have bait too! A great time will be had by all.

[Youth Fishing Passport](#) holders- This is a great chance for you to "check off" several of the saltwater species on the "[Fishing Challenge Scorecard](#)".

off Stratford Point, Stratford Shoal/Middle Ground, Penfield Reef, around the Norwalk Islands, and Cable and Anchor Reef. **Please use circle hooks when fishing with bait (prevent gut hooking) and practice catch and release when possible.**

*Don't have a Boat? Hook up with the many Party or Charter Boats found throughout CT's shoreline from Greenwich to Stonington.*

**STRIPED BASS ANGLERS FISHING IN RHODE ISLAND WATERS** - are advised that the state of Rhode Island has adopted the following regulations pertaining to striped bass. These regulations apply to all Rhode Island state lands and waters including the waters around Block Island: **"Any person recreationally harvesting a striped bass thirty-four (34) inches or larger shall at the time of harvest have the right pectoral fin removed at a point as close to the body of the fish as possible."**

**BLUEFISH** fishing has improved and is more consistent as it should be for this time of year. Larger bluefish weighing in the lower teens have been attacking bunker schools in the lower tidal rivers during dawn and dusk. Bluefish fishing spots include the reefs off Watch Hill, the Race, Thames River, Sluiceway, Plum Gut, Pigeon Rip, lower Connecticut River, Long Sand Shoal, Sixmile Reef, Falkner Island area, New Haven Harbor and upper reaches, lower Housatonic River, buoys 18 and 20 off Stratford Point, Stratford Shoal/Middleground, Penfield Reef, and Cable and Anchor Reef. **SNAPPER** fishing has improved in the tidal creeks and rivers with fish measuring now about 4 to 6 inches in length.

**BLACK SEA BASS** fishing has become a deep water bite. I highly recommend a [party/charter boat](#) trip to fish off of Block Island...there are many giant-sized sea bass out there. Eastern Sound (Fishers Island to Block Island and northeast of Montauk) anglers are having better success. Fishing is still good on the major reefs. For those willing to travel, Block Island Sound is the place to be for humpback sea bass. Closer to home, the rocky reefs from Madison to Branford have been consistent all season. A reminder to all anglers...If you are fishing in water deeper than 100', barotrauma can cause released fish to struggle to make it back to the bottom. A descending device such as the Shelton Fish Descender can help assist the sea bass air bladder to recompress and get safely back down to the depths. See [Fishsmart.org](http://fishsmart.org) for more information.

**SUMMER FLOUNDER** (fluke) fishing is fair to good but you have to put your time in to land that big doormat. Live lining snapper blues is the choice method by fluke sharpies. The usual summer flounder spots include the south shore of Fishers Island (Isabella Beach, Wilderness Point), Napatree Point and along the beach, off the Stonington breakwater, mouth of the Mystic River over to Groton Long Point, Twotree Island Channel, Black Point/Niantic Bay including the Bloody Grounds, Sound View Beach, Long Sand Shoal, Falkner Island area, New Haven Harbor, off the mouth of the Housatonic River during the flood tide, and around the Norwalk Islands.

#### **SHORE FISHING SPOTS & TIDE TABLE INFORMATION**

To find a saltwater shore fishing spot close to where you live, go to the following website:  
<http://www.lisrc.uconn.edu/coastalaccess/>.

For **Enhanced Opportunity Shore Fishing** sites and other fishing information including a site map go to the following website  
<http://www.depdata.ct.gov/maps/saltwaterfish/map.htm>.

Please see the **CT Angler's Guide** for CT tide information.

**SCUP** (porgy) fishing is good to excellent on the major reefs with hubcap size (15+ inches in length) fish being reported! If possible take a trip to the East, southeast of Block Island (great fishing). Otherwise, the lower Housatonic River to Charles Island, Morningside (Milford), **St Mary's by the Sea and Stratford wall** (shore spot) is good. Fishing from shore try Stratford Seawall at high tide. **Rocky Neck State Park**, Harkness Memorial State Park, **Meigs Point Hammonasset**, Sherwood Island State Park and **Fort**

**Trumbull State Park.** Locate your favorite [Enhanced Shore Fishing Opportunities](#) for these hard fighting and excellent eating “Reef Slammers”.

**HICKORY SHAD** fishing was red hot over the weekend in the Black Hall River and the lower Connecticut River (DEEP Marine Headquarters fishing pier). Fishing remains good at Fort Trumbull, Black Hall, Lieutenant River and the lower Connecticut River (DEEP Marine Headquarters fishing pier). Both snappers and hickory shad can be found schooling together at these locations.

**BLUE CRAB** fishing is good in the tidal creeks and bays. The more popular spots are still producing but are starting to be “crabbed out”. **Remember...** all egg bearing females must be released **without avoidable injury**. Minimum carapace length is 5 inches for a hard shell crab. **Blue crab fishermen please release all diamondback terrapins’ caught in your traps. The turtles must be released without avoidable injury.** Legal gear types include: scoop (dip) net, hand line, star crab trap, circular (topless) trap not exceeding 26 inches in diameter. Maryland Style Crab traps are prohibited. **Chicken with the skin on it (along with a long handle net) and a small circular crab trap is the preferred method to capture these tasty crabs.** [Blue Crab Fact Sheet](#) *Angler’s please also note: It’s illegal to snag blue crabs.*

**GOT A FISHING REPORT - PLEASE EMAIL US AT** [deep.marine.fisheries@ct.gov](mailto:deep.marine.fisheries@ct.gov)

**NOTABLE CATCHES:**

<i>species</i>	<i>Length (inches)</i>	<i>Weight (lbs)</i>	<i>name</i>
Summer Flounder	32"	12 lb 8 oz.	Cathy Strzepek
Summer Flounder	34"	12 lb	James Johnson
Striped Bass	47"	46 lb, 5 oz	Alyssa Zuppe
American Eel	37.25	3 lb 5 oz	Albert Zuppe
Bluefish	34"	C&R	Blake Kamoen
Bluefish	36"	C&R	Derek Williams
Bluefish	36.5"	C&R	Derek Williams
Bluefish	34"	C&R	Nicholas Bourdoulous

**For Current Connecticut Recreational Fishing Regulations:** Anglers should consult the 2015 Connecticut Anglers Guide which is now available at most Town Clerks Offices, DEEP offices and at tackle stores selling fishing licenses. Current regulations, electronic versions of the Angler’s Guide and additional information can all be accessed on the DEEP website at: [www.ct.gov/deep/fishing](http://www.ct.gov/deep/fishing).

The Connecticut Department of Energy and Environmental Protection is an Affirmative Action/Equal Opportunity Employer that is committed to complying with the requirements of the Americans with Disabilities Act. Please contact us at (860) 418-5910 or [deep.accommodations@ct.gov](mailto:deep.accommodations@ct.gov) if you have a disability and need a communication aid or service; have limited proficiency in English and may need information in another language; or if you wish to file an ADA or Title VI discrimination complaint.

**DEEP WEEKLY Fishing Report**



**Connecticut Department of  
ENERGY & ENVIRONMENTAL PROTECTION**

79 Elm Street, Hartford, CT 06106  
[www.ct.gov/deep](http://www.ct.gov/deep)

Redbreast sunfish & Striped Bass  
images courtesy Duane Raver/USFWS.